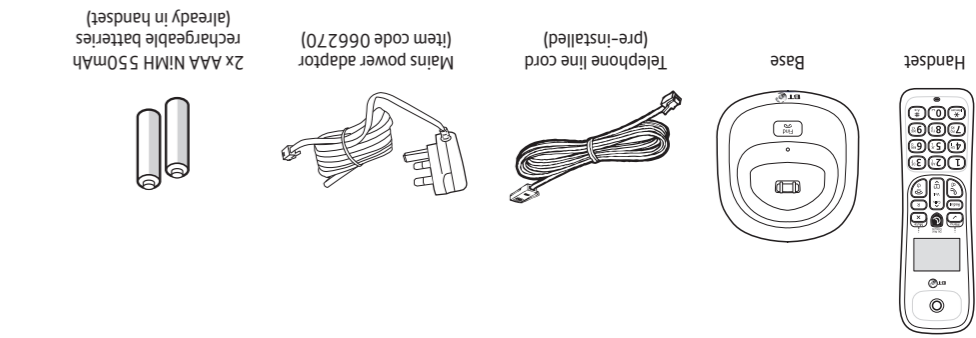
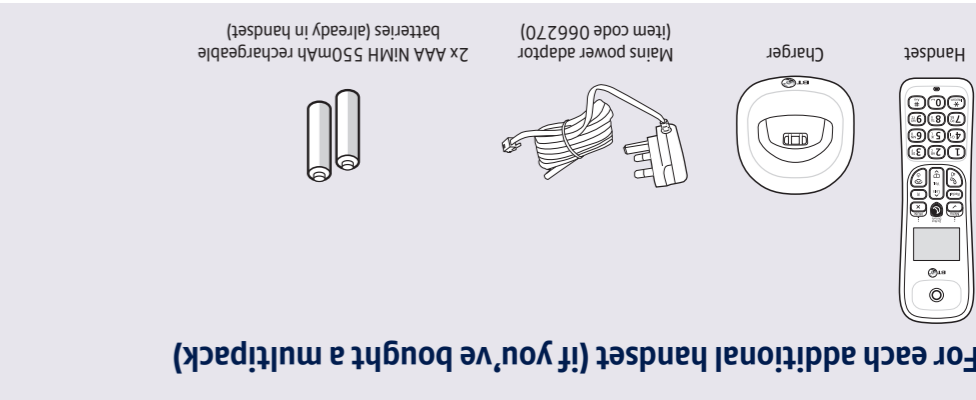


Important: Only use the mains power adaptors, cables and rechargeable batteries supplied in this box, or this product may not work. Any replacement rechargeable batteries must be the same type. BT accepts no responsibility for damage caused to your phone by using any other type of batteries.



What's in the box

For each additional handset (if you've bought a multipack)

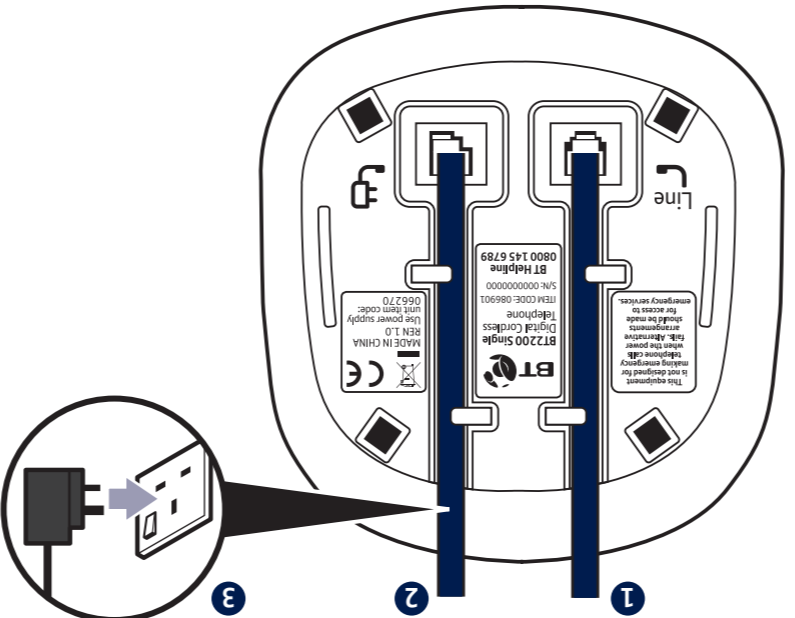
BT2200

Digital Cordless Phone



Offices worldwide
 © British Telecommunications plc 2016
 Registered Office: 81 Newgate Street, London EC1A 7AJ
 Registered in England No. 18000000
 Designed and produced by The Art & Design Partnership (ADP).
 Printed in China / Issue 2 / ADP09-16

Free Technical Help & Support*
bt.com/producthelp
0800 145 6789
 Call us or go online if you have any difficulties with your phone

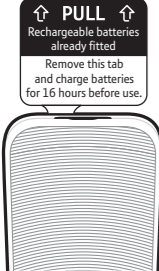


- 1 The telephone line cord is already fitted, plug the other end into the wall socket.
- 2 Plug the mains power adaptor into the base, with the cable clipped in the groove provided.
- 3 Plug the other end of the power adaptor into the wall power socket and switch on.

1 Plug in

2 Charge

- 1 Activate the batteries by pulling the plastic tab away from the bottom of the handset.
- 2 The handset will check for a link with the base station. Once found, follow the prompt to set the date and time.
- 3 Place the handset on the base to charge the batteries for 16 hours.



Important: you should charge the batteries for 16 hours before using the handset for the first time.



Set up your additional handsets (if you've bought a multipack)

- 1 For each additional handset and charger: plug the mains power adaptor into the socket on the underside of the charger, secure the cable behind the retaining clip and plug the other end into the wall power socket and switch on.
- 2 Activate the batteries as shown above. Then place the handset on the charger to charge for 16 hours.

Important: If you need to remove the batteries, place your fingers in the groove at the bottom of the handset and lift the cover up to release it. Then gently ease the batteries out.

Your BT2200 is now ready to use.

General information

For information on safety instructions, cleaning, technical information or connecting to a switchboard, please refer to the 'General information' section in the full user guide at bt.com/producthelp

Guarantee
 Your BT2200 is guaranteed for a period of 12 months from the date of purchase.

Subject to the terms listed below, the guarantee will provide for the repair of, or at BT's or its agent's discretion the option to replace the BT2200, or any component thereof, (other than batteries), which is identified as faulty or below standard, or as a result of inferior workmanship or materials. Products over 28 days old from the date of purchase may be replaced with a refurbished or repaired product.

- The conditions of this guarantee are:
- The guarantee shall only apply to defects that occur within the 12 month guarantee period.
 - Proof of purchase is required.
 - The equipment is returned to BT or its agent as instructed.

This guarantee does not cover any faults or defects caused by accidents, misuse, fair wear and tear, neglect, tampering with the equipment, or any attempt at adjustment or repair other than through approved agents.

This guarantee does not affect your statutory rights. To find out what to do, if your phone is in or outside of the 12 month guarantee, please look in the full user guide at bt.com/producthelp

How to recycle your equipment
 The symbol shown here and on the product means that the product is classed as electrical or electronic equipment, so DO NOT put it in your normal rubbish bin.



It's all part of the Waste Electrical and Electronic Equipment (WEEE) Directive to recycle products in the best way – to be kinder to the planet, get rid of dangerous things more safely and bury less rubbish in the ground.

You should contact your retailer or supplier for advice on how to dispose of this product in an environmentally friendly way.

Warning
 You won't be able to call 999 from this phone if there's a power cut, so make sure you've got another way to call for help in an emergency.

R&TTE Directive & Declaration of Conformity
 This product is intended for use within the UK for connection to the public telephone network and compatible switchboards.
 This equipment complies with the essential requirements for the Radio Equipment and Telecommunications Terminal Equipment Directive (1999/5/EC).

For a copy of the Declaration of Conformity please refer to bt.com/producthelp

3 Using your phone

You'll need Caller Display

To get the most from your nuisance call blocker phone and for all the features to work, you'll need to subscribe to a Caller Display service from your network provider. Charges may apply.

Making and receiving calls

Make and end a call

Press green then dial the phone number. Press red to end the call.

Answer a call

Press green when the phone is ringing.

To answer a call without having to press , you can set Auto Pick-Up to On. To do this, press , scroll to **Personal Set**, press . Scroll to **Auto Pick-Up** and press . Scroll to **On** and press .

Mute

Press during a call. Press to return to your caller.

View or dial a number in Calls list†

The Calls list stores details of the last 50 incoming calls.

- 1 Press , then . Press or to scroll through the list.
- 2 Press to dial the number.

Nuisance Call Blocking†

Block an incoming call number in your Call list

- 1 Press to enter the **Call Log**. **Call List** is displayed, press . Then scroll to the entry you want to block and press .
- 2 Scroll down to **Call Block**, press .
- 3 Screen will show the number that will be blocked. Press and number will be blocked as soon as call blocking is turned on following the instructions below.

Turn call blocking on to enable block list

- 1 Press , scroll to **Call Block** and press again. Enter default PIN 0000.
- 2 Scroll to **Blacklist** and press . Then scroll to **Block mode** and press again.
- 3 Scroll to **Block List** and press .
- 4 Scroll to **Always On** to enable the block list feature. Or, you can set the feature to block calls from your block list between set times, using the **Start & end** options.

Phonebook

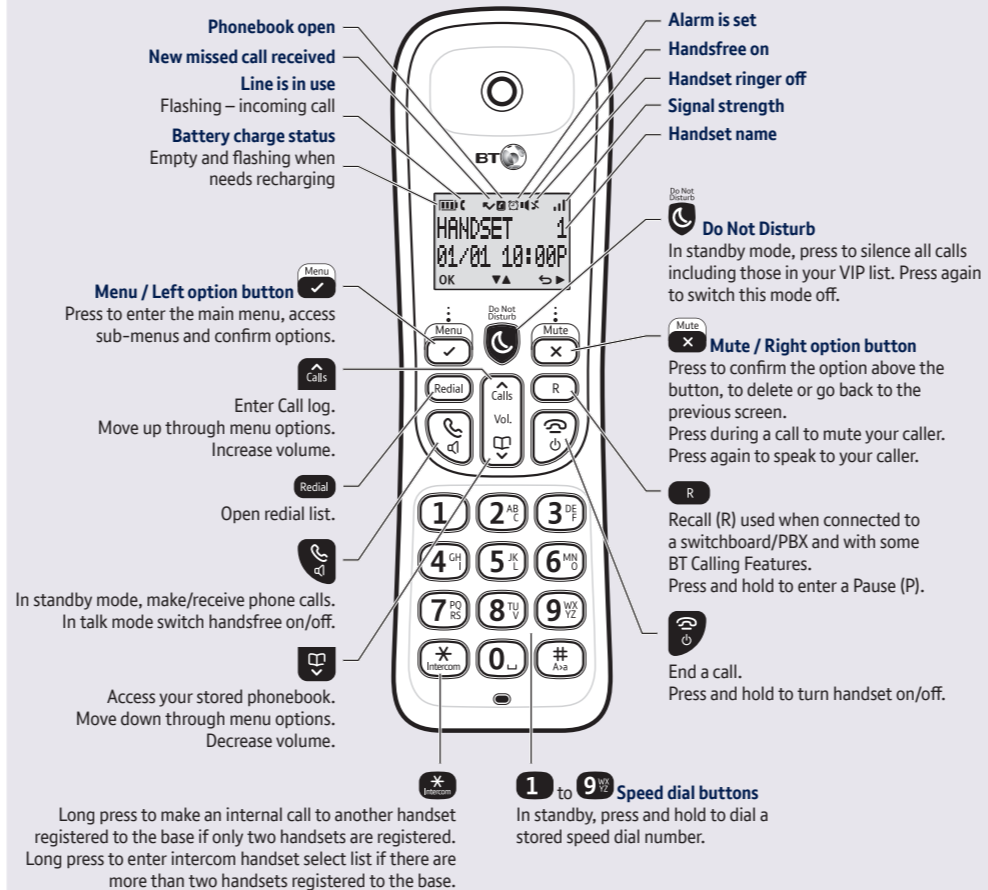
Store entry in phonebook (up to 50)

- 1 Press , scroll to **Phonebook** and press again. Scroll to **New Entry**, press .
 - 2 Enter name using keypad and press .
 - 3 Enter phone number and press to save.
 - 4 **Add to VIP?** is displayed. Press if you want to add to your VIP list. **Saved!** is displayed. Or, press to save as a normal contact without adding to the VIP list.
- To save a number to your phonebook from the Calls list, press , then . Scroll to the number and press . **Save Number** is displayed, press . Enter name and press . Edit the number if required, press to save.

Dial entry in phonebook

- 1 From the home screen, press .
- 2 Scroll or to display the entry and press to dial.

Handset buttons and display icons



Using the menu

- Press to open the main menu, scroll through using or . When the menu you want is displayed, press . Press or to scroll through the sub menus and press to select.
- and buttons let you select options displayed above the buttons on the display.
- Use to exit a menu or go back.
- If no buttons are pressed for 30 seconds the handset will return to the idle screen.

Handset volume and sounds

Incoming speech volume

During a call, press or to increase or decrease the volume of your caller's voice.

Handset ringer volume

- 1 Press , scroll to **Personal Set**, press .
- 2 **Handset Tone** is displayed, press .
- 3 **Ring Volume** is displayed, press .
- 4 Scroll or to adjust the volume, press to save.

Handset ringtone

- 1 Press , scroll to **Personal Set**, press .
- 2 **Handset Tone** is displayed, press .
- 3 Scroll to **Ring Melody**, press .
- 4 Press or to hear ringtones, press to save.

Using the keypad

- When entering letters you may need to press the same button a few times until the letter you want is displayed, e.g. press **2** once for **A**, twice for **B**, three times for **C**.
- To enter a space, press **0**.
- To toggle between upper and lowercase characters, press and hold **#**.

Troubleshooting

Most problems can be fixed with a few simple checks.

Problem	Solution
No dial tone	Only use the cables supplied. Make sure the telephone line cord is plugged in correctly.
Handset not charging	Make sure the handset is turned on before placing on the base or charger to charge.
Phone ringer does not ring	The ringer volume may be set to Ringer off. Adjust the handset Ring volume. Check that Block mode or Do Not Disturb is not switched on.
Using broadband on the same phone line?	To avoid problems with your broadband or noise on your phone line, you might need to plug your telephone line cord into the wall via a microfilter (not supplied). If your main phone socket has a single socket, as shown, you'll need to use microfilters. You don't need to use microfilters if your main phone socket has two separate sockets, like either of these:
What's the button on the base used for?	Press and all handsets registered to the base will ring. Once found, press again to stop the ringing. The is also used when registering additional handsets, press and hold to enter registration mode. See the full user guide online for registration instructions.

Need some help?

Frequently asked questions and a full user guide are available online.

bt.com/producthelp

If you cannot find the answer to your question in the full online user guide, call our free Helpline. Our dedicated advisors are more likely to be able to help you than the retailer where you bought your phone.

0800 145 6789*

This user guide is also available in other formats: large print, Braille and audio CD. Call the helpline for a copy.

* Calls made from within the UK mainland network are free. Mobile and international call costs may vary.
† Requires a subscription to a Caller Display service from your network provider. Charges may apply.